

***The New JIBS:
International Business Is Our Business***

Lorraine Eden
JIBS Editor-in-Chief Elect

JIBS Incoming Editors & Editorial Boards Meeting
2007 Academy of International Business Annual Meetings
June 28, 2007, 7:00-8:00 am, Grand 3, Westin Hotel Indianapolis



The New JIBS 2008-2010

- Goals
- Structure
- Processes
- Strategies
- Activities
- Implications

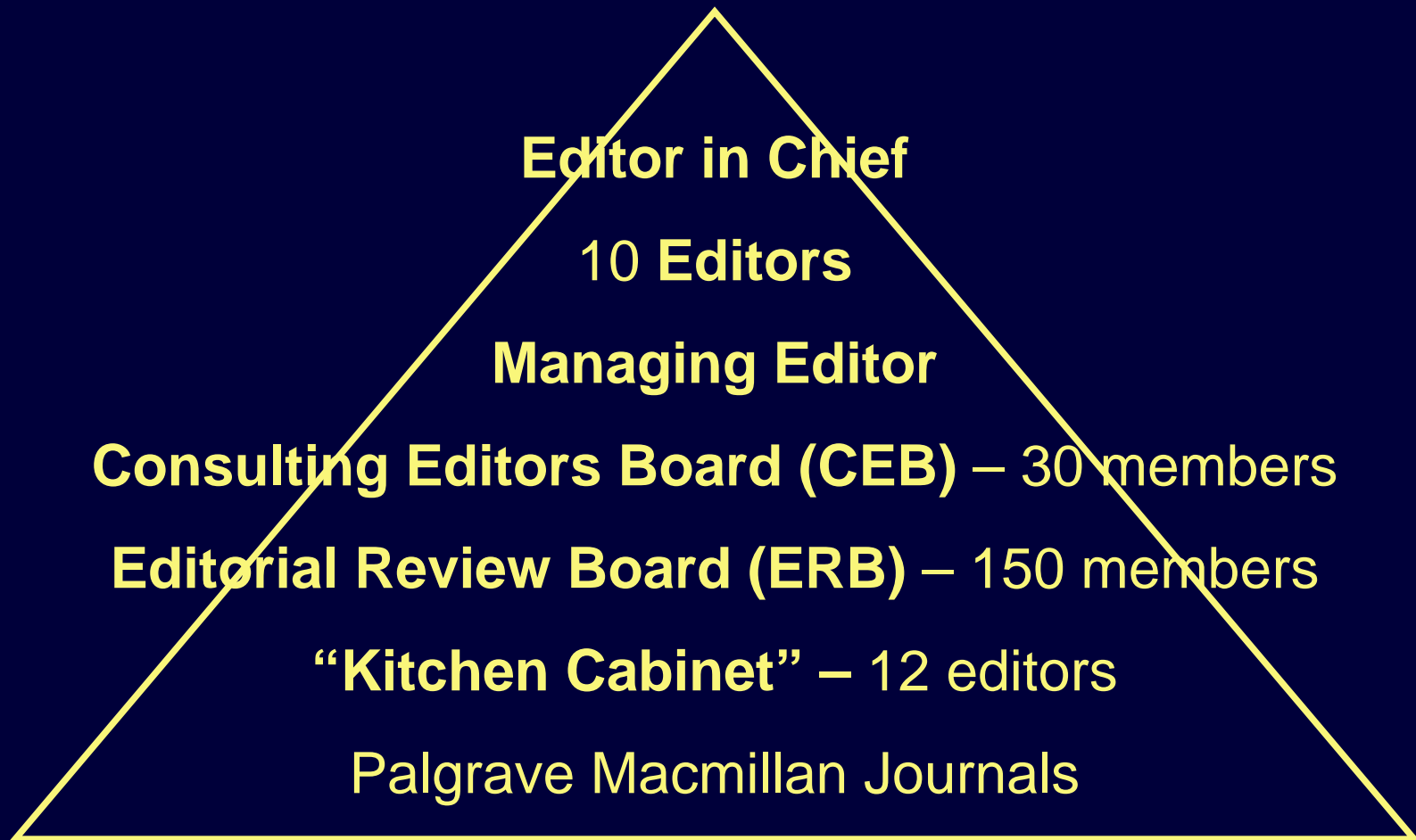


The New JIBS: Goals

- Publish insightful and influential research on international business (IB)
- Move *JIBS* into the “big leagues” ranked among the top-tier journals of business and management



The New JIBS: Structure



The New JIBS Structure: Editors



Srilata A. Zaheer
Reviewing Editor



Lorraine Eden
Editor in Chief



Anne Hoekman
Managing Editor



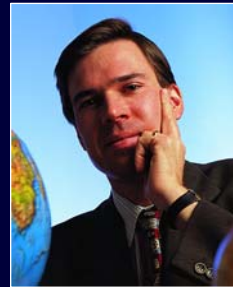
The New JIBS Structure: Area Editors



Daniel C.
Bello



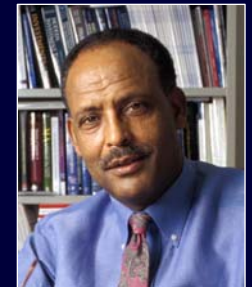
Sea-Jin
Chang



Witold J.
Henisz



Lee H.
Radebaugh



Lemma W.
Senbet



Anand
Swaminathan



Rosalie
L. Tung



Alain
Verbeke



Arjen van
Witteloostuijn





The New JIBS Structure: Areas

- ❖ Daniel Bello – International Marketing & Supply Chain Management
- ❖ Sea-Jin Chang – Managing the MNE
- ❖ Witold Henisz – Institutional & Political Environment of IB
- ❖ Lee Radebaugh – Accounting & IB
- ❖ Lemma Senbet – Finance & IB
- ❖ Anand Swaminathan – Organization Theory & IB
- ❖ Rosalie L. Tung – Int'l HR, Comparative & Cross-Cultural MGMT
- ❖ Alain Verbeke – MNE Theory & International Strategy
- ❖ Arjen van Witteloostuijn – Economics, Ecology & Strategy in IB



Consulting Editors Board

- Guest Edit up to 3 new manuscripts per year and handle each manuscript through final decision (may be nominated either by author or by Editor-in-Chief).
- Review up to 3 new manuscripts each year and all revise-and-resubmits.
- Provide advice to the Editor-in-Chief and act in an ad hoc capacity when requested by the Editor-in-Chief.
- Selected on the basis of (1) recommendations by the editors, (2) top scholars in IB and (3) editorial experience.
- Serve July 2007 through December 2008. Second board will be struck for January 2009 through December 2010.



The New JIBS Structure: Consulting Editors Board



Male	26	87%
Female	4	13%
University Location: USA	21	70%
University Location: non-USA	9	30%
Belgium	1	3.3%
Canada	3	10.0%
France	1	3.3%
Hong Kong	2	6.7%
Netherlands	1	3.3%
United Kingdom	1	3.3%
AIB Fellow	15	50%
Non-AIB Fellow	15	50%



The New JIBS Structure: CEB Members



Paul Beamish	UWO	*	Tarun Khanna	Harvard	
Jean Boddewyn	Baruch	*	Stephen J. Kobrin	Wharton	*
Peter J. Buckley	Leeds	*	Donald R. Lessard	MIT	*
S. Tamer Cavusgil	MSU	*	Kwok Leung	CUHK	
Joseph Cheng	UIUC		Yadong Luo	Miami	
Farok J. Contractor	Rutgers	*	Marjorie A. Lyles	Indiana	*
Tina Dacin	Queen's		Thomas Murtha	UIC	
Jose de la Torre	FIU	*	Kendall Roth	USC	
Yves L. Doz	INSEAD	*	Myles Shaver	Minnesota	
Vihang Errunza	McGill		Stephen B. Tallman	Richmond	
Cheol S. Eun	GIT		David Tse	HKU	
Pankaj Ghemawat	Harvard	*	Daniël Van Den Bulcke	Antwerp	*
Jean-François Hennart	Tilburg	*	Mary Ann Von Glinow	FIU	*
Robert E. Hoskisson	ASU		Bernard Yeung	NYU	*
Geoffrey Jones	Harvard		Shaker Zahra	Minnesota	

* AIB Fellow



Editorial Review Board

- Review up to 6 new manuscripts per year.
- Review revise-and-resubmits.
- Selected on the basis of (1) recommendations by the editors, (2) publications in JIBS and other A journals, and (3) quality and frequency of reviewing for JIBS.
- Serve July 2007 through December 2008. Second board will be struck for Jan 2009 through Dec 2010.



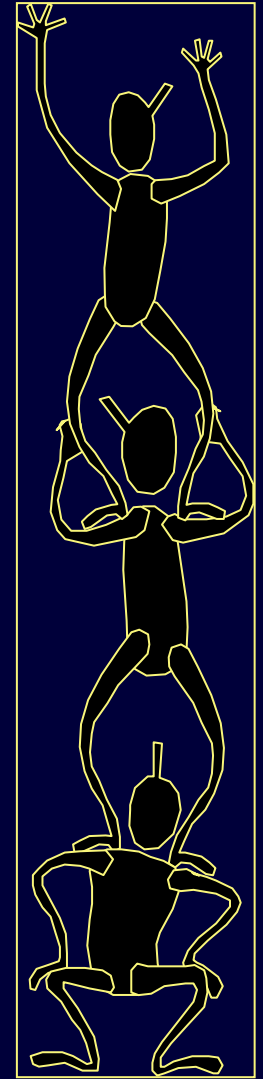
The New JIBS Structure: Editorial Review Board

Male				117	78%	
Female				33	22%	
University Location: USA				79	52.7%	
University Location: non-USA				71	47.3%	
	Australia	4	2.67%	Netherlands	5	3.33%
	Austria	1	0.67%	New Zealand	3	2.00%
	Belgium	3	2.00%	Norway	1	0.67%
	Canada	12	8.00%	Singapore	4	2.67%
	Finland	1	0.67%	South Korea	2	1.33%
	France	2	1.33%	Spain	1	0.67%
	Germany	2	1.33%	Sweden	4	2.67%
	Hong Kong	5	3.33%	Switzerland	2	1.33%
	Israel	2	1.33%	Turkey	1	0.67%
	Japan	1	0.67%	United Kingdom	13	8.67%
	Mexico	1	0.67%			
AIB Fellow				6	4%	
Non-AIB Fellow				144	96%	



The New JIBS Structure: Lorraine's "Kitchen Cabinet"

- **Linda Argote**, Carnegie Mellon (editor *Organization Science*)
- **Paul Beamish**, UWO (former editor *JIBS*)
- **Jean Boddewyn**, Baruch College (editor *Int'l Studies of Management & Organization*)
- **Michael A. Hitt**, Texas A&M (editor *Strategic Entrepreneurship Journal*, former editor *Academy of Management Journal*)
- **Duane Ireland**, Texas A&M (editor elect *Academy of Management Journal*)
- **Bruce Kogut**, INSEAD (editor *European Management Review*)
- **Maasaki Kotabe**, Temple University (editor *Journal of International Management*)
- **Jan Leighley**, Arizona (former editor *American Journal of Political Science*)
- **Arie Lewin**, Duke (editor *JIBS*, former editor *Org Science & Management Science*)
- **Linda Putnam**, Texas A&M (editor *Organization*, former editor *Human Resources*)
- **Anne Tsui**, ASU (editor, *Management & Organization Review*, former editor *Academy of Management Journal*)
- **Richard Woodman**, Texas A&M (editor *Journal of Applied Behavioral Science*)

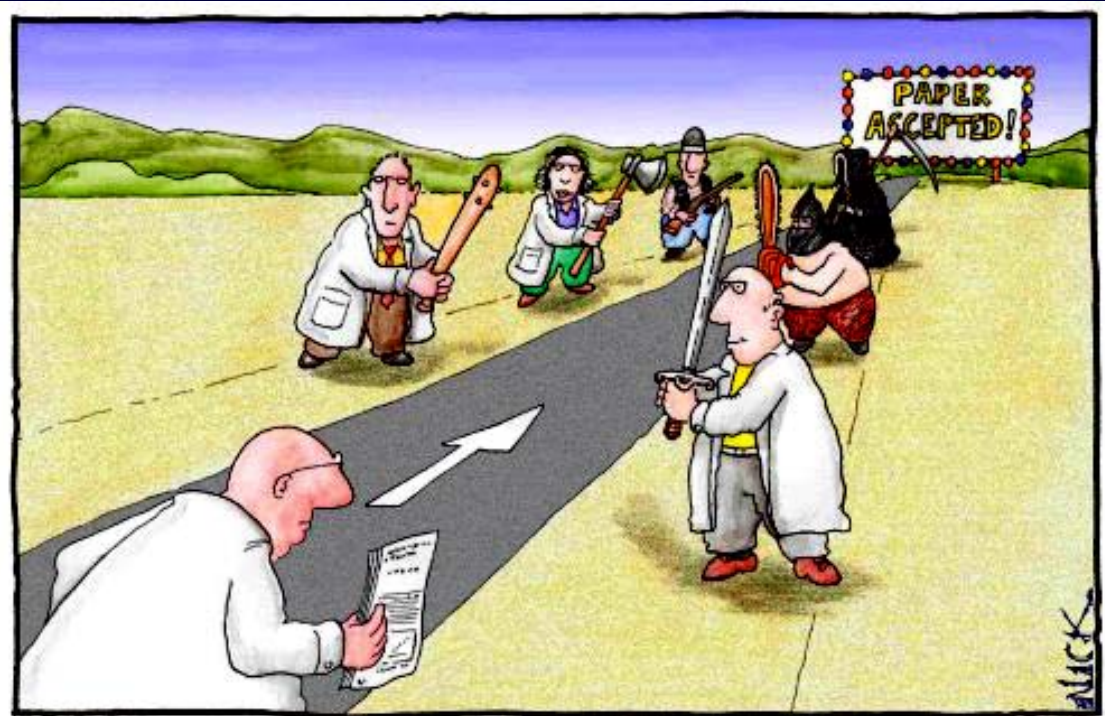


The New JIBS: Processes

- Manuscript Central – opens July 1, 2007
<http://mc.manuscriptcentral.com/jibs>

A new peer review process:

- faster
- user friendly
- info intensive
- gets results



Most scientists regarded the new streamlined peer-review process as 'quite an improvement.'




The New JIBS Processes: Peer Review



The Reviewing Editor's MC Dashboard



[Edit Account](#) | [Instructions & Forms](#) | [Log Out](#) | [Get Help Now](#)



[Main Menu](#) → [Reviewing Editor Dashboard](#) → Awaiting RE Checklist

Site configuration complete. You are logged in as Lorraine Eden

View Manuscripts

To take action on a manuscript or view the full manuscript record, click the "Take Action" button. To read the manuscript, click the "View Manuscript" link. [Read More ...](#)

Awaiting RE Checklist

Manuscripts 1-1 of 1

Manuscript ID ↑	Manuscript Title	Date Submitted ↓	Status	Take Action
Manuscript Type	Submitting Author			
JIBS-0053-2007-06-OM	original manuscript [View Submission]	25-Jun-2007	ED/CE/GE: Not Assigned RE: Not Assigned EIC: Editor, Evelyn EO: Administrator, Abigail EO: Hoekman, Anne	<input checked="" type="checkbox"/>
Original Manuscript	Associate, Anne			

Manuscripts 1-1 of 1



The Reviewing Editor's Checklist

- Fit - Is the problem addressed an international business problem?
- Fit - Is the research likely to be interesting to international business scholars?
- Fit - Does the manuscript have the potential to advance our knowledge of international business theory, research or practice?
- Fit - Is JIBS the most appropriate journal for publication of this manuscript?

- Quality - Does the manuscript conform to generally accepted standards of scholarship in style and content?
- Quality - Does the manuscript have intellectual depth?
- Quality - Are the methods/analysis in the manuscript appropriate to the research question being asked? Do they appear to be reasonably rigorous?
- Quality - Is the manuscript reasonably clearly written?



The Editor-in-Chief's MC Dashboard

JIBS JOURNAL OF INTERNATIONAL BUSINESS STUDIES

[Main Menu](#) → Editor-in-Chief Dashboard

Site configuration complete.

You are logged in as Lorraine Eden

Dashboard You can access manuscripts in each peer review status by clicking on the status queue title. The number next to each status queue title indicates the number of manuscripts in that status. You may search for specific manuscripts with the Quick Manuscript Search form or conduct an "Advanced Search" by clicking the link below (the advanced search form will display at the bottom of the screen). For tips on conducting searches, click the following link: [Read More ...](#)

Editor-in-Chief Lists

You may click on the manuscript list title to view a full listing of manuscripts in each status, or click on the number next to the list to jump directly to the first manuscript in the list.

- 0 [Awaiting RE Checklist](#)
- 3 [Awaiting ED/CE/GE Assignment](#)
- 3 [Awaiting Reviewer Selection](#)
- 1 [Awaiting Reviewer Invitation](#)
- 2 [Overdue Reviewer Response](#)
- 1 [Awaiting Reviewer Assignment](#)
- 0 [Awaiting Reviewer Scores](#)
- 0 [Overdue Scores](#)
- 0 [Awaiting ED/CE/GE Recommendation or Decision](#)
- 2 [Awaiting EIC Decision](#)

Quick Search - [Show Advanced Search](#)

You may conduct a wildcard search by adding an asterisk (*) to the end of the search string. For example, to view a list of all of the manuscripts whose titles begin with the words "neuroscience" or "neurology" simply type "neuro*" in the Title field and click "Search."

Saved Search:

Manuscript ID:

Manuscript Title:

Author's first or last name:

* Keyword: Pick


Editor-in-Chief Tools

Reports

- [At-A-Glance Statistics](#)
- [Detailed Reports](#)



The Editor's MC Dashboard



[Main Menu](#) → Editor/Consulting Editor/Guest Editor Dashboard

Site configuration complete. You are logged in as Lorraine Eden

Dashboard

You can access manuscripts in each peer review status by clicking on the status queue title. The number next to each status queue title indicates the number of manuscripts in that status.

You may search for specific manuscripts with the Quick Manuscript Search form or conduct an advanced search by clicking the link below. The search results will display only manuscripts that have been assigned to you as Editor. For tips on conducting searches, click the following link: [Read More...](#)

Editor/Consulting Editor/Guest Editor Lists

You may click on the manuscript list title to view a full listing of manuscripts in each status, or click on the number next to the list to jump directly to the first manuscript in the list.

- 0 Awaiting Reviewer Selection
- 0 Awaiting Reviewer Invitation
- 0 Overdue Reviewer Response
- 0 Awaiting Reviewer Assignment
- 0 Awaiting Reviewer Scores
- 0 Overdue Scores
- 0 Awaiting ED/CE/GE Recommendation or Decision

Quick Search - [Show Advanced Search](#)

You may conduct a wildcard search by adding an asterisk (*) to the end of the search string. For example, to view a list of all of the manuscripts whose titles begin with the words "neuroscience" or "neurology" simply type "neuro*" in the Title field and click "Search."

Saved Search:


Manuscript ID:

Manuscript Title:

Author's first or last name:

* Keyword: Pick

[Editor/Consulting Editor/Guest Editor Tools](#)

 [Reports](#)



The New JIBS Processes: Office

- Transition dates between Editorial Teams:
 - 07/01/07 – New team starts handling submissions
 - 01/01/08 – Formal transition date from old to new teams
 - early 2008 - Closure of JIBS Duke Office and movement of all open files to JIBS MSU Office – files to be entered into Manuscript Central and re-assigned to new editor.
- Web-based Intranet & Video-conferencing linking the Editorial Team.
- Twice Annual Closing of JIBS Office (AIB, Winter Break).



The New JIBS Processes: Benchmarking

Benchmarking against the “big league” journals of business & management



Yr	AMR	AMJ	JIBS	JMGMT	JMKTG	MS	OS	SMJ
2006	4.52	3.35	2.25	1.95	4.83	1.69	2.82	2.63
2005	4.25	2.20	1.25	1.54	4.13	1.70	1.99	1.90
2004	3.72	2.65	1.29	1.24	3.10	1.93	2.30	1.98
2003	4.42	3.34	1.39	1.65	2.61	1.47	2.37	2.72
2002	3.70	2.54	1.46	1.74	2.29	1.35	1.61	3.09
2001	3.16	2.83	0.87	1.31	2.40	1.50	2.06	2.68

Source: ISI Web of Science data for selected journals (date accessed 6/12/07)



The New JIBS Processes: Rankings



Year	JIBS's Rank among ISI Business Journals		No of Business Journals	JIBS's Rank among ISI MGMT Journals		No of MGMT Journals
	Journal Impact Factor	Immediacy Index		Journal Impact Factor	Immediacy Index	
2006	8	24	64	8	36	78
2005	16	24	61	23	32	71
2004	12	6	57	16	12	67
2003	14	43	57	18	14	67
2002	15	43	54	14	15	65
2001	22	17	55	19	22	61

Source: ISI Web of Science data for selected journals (date accessed 6/12/07)



The Top 20 SSCI Journals, 2006

	<u>MGMT</u>	<u>BUSINESS</u>
1	MIS QUARTERLY	J MARKET
2	AMR	AMR
3	AMJ	MGMT SCI
4	ORG SCI	AMJ
5	SMJ	SMJ
6	INFORM SYST RES	ASQ
7	ASQ	J MARKET RES
8	JIBS	JIBS
9	INFORM MGMT	ENTREP THEORY PRACT
10	J OPER MGMT	J CONSUM RES
11	J MGMT STUD	J MGMT STUD
12	J ORG BEHAVIOR	J MGMT
13	J MGMT	J SERV RES
14	HUM RES MGMT	J BUS VENTUR
15	J MGMT INFO SYS	J PROD INNOV MGMT
16	LEAD QUART	HARV BUS REV
17	MGMT SCIENCE	J ENVIRON ECON MGMT
18	DEC SCIENCE	J ACAD MARKET SCI
19	J PROD INNOV MGMT	J INTERACT MARK
20	ORG STUD	CAL MGMT REV



The New JIBS Processes: Benchmarking

JIBS now ranks
8th among all
BUSINESS
journals
and
8th among all
MANAGEMENT
journals.



"I recommend our 'wild' expectations be downgraded to 'great.'"



The New JIBS: Strategies

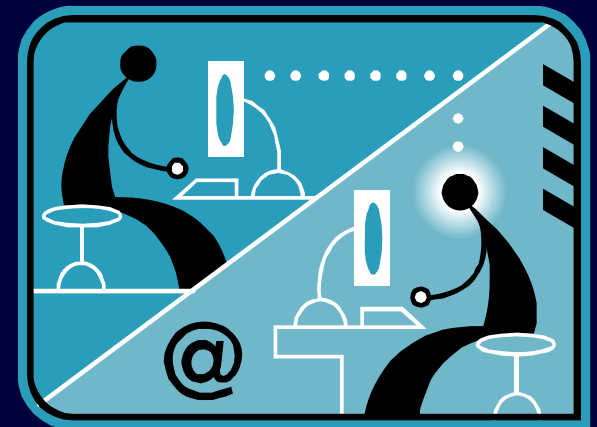
- **New Policy Guidelines**
 - ✓ Statement of Editorial Policy
 - ✓ Instructions for Contributors
 - ✓ Code of Ethics
 - ✓ Style Guide
 - ✓ Guidelines for Reviewers
 - ✓ Guidelines for Special Issues



The New JIBS Strategies: Journal

- Journal Format Changes
 - ✓ Articles & Research Notes
 - ✓ “Introduction” to issue by Editor in Chief
 - ✓ Regular “Letters from the Editors”
 - Tentatively: Perspectives (submit as regular articles), IB Letters (drop), Book Reviews (web only)

- JIBS Website: more content



The New JIBS: Activities

- Meet the Editors Panels – AOM 2007, ISA 2008
- JIBS Board Mtg – AOM Philly - Sunday Aug 5, 2007
- AIB/JIBS Frontiers Conference - FIU – 2007
- JIBS Special Issues
 - “Asia & IB in 21st Century” – due date Dec 1, 2007
 - AIB50th /JIBS40th Anniversary Issue – “New Directions in IB Theory” - due date – July 1, 2007 through March 31, 2008
- AIB Milan 2008
 - JIBS Best Reviewer Awards - New!
 - JIBS Paper Development Workshop
 - Meet the Editors Panel & JIBS Board Meeting



Università Commerciale
Luigi Bocconi



JIBS/JIBS Decade Award & Reception



The New JIBS: Implications



The New JIBS opens for business July 1.

Our goals are to:

- ✓ Publish insightful and influential research in international business.
- ✓ Move into the “big leagues” of Premier Journals of Business and Management.



The New JIBS: Implications



JIBS has joined the Top 10 Business & Management Journals. To move up, JIBS must now go head-to-head with these “big league” journals. This means JIBS must attract and publish only the highest quality manuscripts. The criterion for publication must be:

insightful and influential articles on international business that are widely read and cited by business and management scholars.

This will be the base-line criterion for paper acceptance, to be kept in mind by all JIBS Editors, Consulting Editors, Editorial Board members, Reviewers and Authors.



The New JIBS is ready for business.

Our Business Is *International Business*.

We look forward to working with you.

Thank-you! Questions?

Contact me at editor-in-chief@jibs.net

